

INSTANT FENCE

Operations Manual



IMPORTANT!



Should you encounter any problems with your new product, please refer to this instruction manual. Be sure to file this manual in a safe place for future reference.

If you should need assistance, call our toll free HELP line at:

1-800-732-2677 or www.petsafe.net

WE CAN HELP YOU!

Components:

- A. Transmitter
- B. Receiver with collar
- C. Battery Module
- D. AC adaptor/power pack
- E. Boundary flags
- F. Video
- G. Owners / training manual
- H. Extra probes
- I. Test light kit with instructions



I. What your Pet Containment System IS and IS NOT

- IS a deterrent to train pets to remain within the boundary.
- IS a great training aid.
- IS for residential use only.
- IS for healthy dogs. If you have doubts, contact your veterinarian.
- IS NOT a solid barrier. It will not work without proper training.
- IS NOT for use with vicious animals or guard dogs. If you believe your dog may pose a threat to others or has a history of aggressive behavior, **DO NOT USE THIS SYSTEM.**

Radio Systems Corporation shall NOT be liable for any property damage, economic loss or any consequential damages sustained as a result of an animal crossing the boundary.

II. Determine the location of your transmitter

To determine the approximate placement of the transmitter and the approximate boundary that will be produced by the transmitter refer to figure 2 and complete the following:

- Draw a sketch of your property that includes the lot line, the dimensions of your lot and house. If one is available, use the survey map of your lot.
- Draw an approximate circle around the area in which you want to confine your pet. The actual size of this circle can be up to a 90 foot radius.

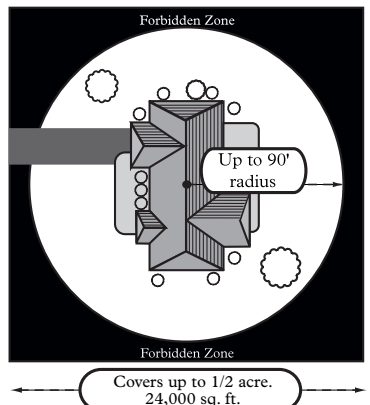


Figure 2

- When drawing this circle the transmitter must be positioned in the center of the circle, located on the ground floor of the house or other dry, protected indoor area (e.g., garage) and near a grounded AC outlet.
- If you have a relatively flat yard, place the transmitter 2-4 feet above the ground on a nonmetallic table, shelf or mount directly on a wall (template located on back page).

III. Prevent potential interference of signal

When choosing a location for the transmitter, keep the following in mind:

- Avoid locating within three feet of any metal objects or objects with "heavy wiring", including main water or power lines, metal water heaters, metal cabinets, kitchen, laundry appliances, fireplace and heating or AC ducts.
- Circular signal pattern may be affected by a slope in your yard.

Note:

- *Moving the transmitter will change boundary.*
- *The transmitter must be placed in a vertical position.*

IV. Turn on transmitter

Once you have selected the location of the transmitter, complete the following:

- Plug the AC adaptor/ power pack into an AC outlet and into the power jack slot (1) located on the transmitter.
- The Boundary switch (2) should be in the HIGH position for maximum range.
- Turn the boundary control dial (3) to the (8) position on dial.
- Turn the POWER switch (4) to ON. A red light will glow.



Figure 3

V. Activate receiver

- The receiver must be located within 10 feet of the energized transmitter while installing the battery module.
- Align arrow on battery module with arrow on receiver.
- Place a coin in the slot in the battery module, and turn clock wise to the "lock" position.
- The LED indicator light will flash, indicating which one of four correction levels are set. The LED also acts as a low battery indicator.
- The receiver is now activated with the proper signal.
- To test the receiver, listen for a series of tones as you exit the safe zone. Be careful not to touch the probes.

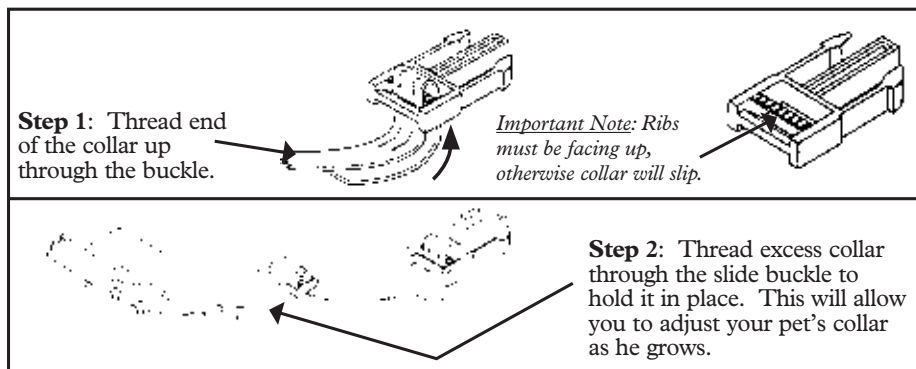


Figure 4

VI. Placing the collar on your pet

Place receiver collar on your dog with the receiver hanging directly beneath your dog's neck. Adjust the collar securely so that the probes touch the skin of your dog's neck. Make sure the collar is not so tight as to cause discomfort. When the collar is properly adjusted, you should be able to place one finger between the probes and the dog's skin.

You are now ready to begin training!



Caution: Do not leave collar on too tight. Doing so can cause Pressure Necrosis, a condition that results in skin deterioration. Check your pet's collar regularly. Remove the collar weekly and wash your dog's neck and probes with mild soap (approved by a veterinarian). If a rash or sores form, take the collar off for a few days. When replacing it, make sure that it is not too tight.

VII. Setting the correction level

- Remove the switch cover shown in Figure 5.
- Press the button and hold the button. The LED indicator light will come on.
- Release the button and the LED will flash the current correction level.
- Press the button again within 5 seconds, and the correction level will be incremented to the next level.
- Repeat this process until you obtain the correction level you want.
- Refer to the Receiver LED function and response table to choose the correction level that best fits your pet.
- The receiver is equipped with memory back up. After you replace the batteries in the receiver, you will not have to reset the correction level. The LED indicator light will flash for the correction level last set.



Figure 5

Receiver LED Function and Response

Receiver LED Function	Correction	LED Response	Size of Dog
Correction Level 1	No Correction, Beep Only	1 Flash	Training Only
Correction Level 2	Low Correction	2 Flashes	Less than 20lbs
Correction Level 3	Medium Correction	3 Flashes	20-50lbs
Correction Level 4	High Correction	4 Flashes	Greater than 50lbs
Low Battery		Flashes every 4-5 sec.	

VIII. Establishing boundaries

Tip: Use two people to set boundary - one to hold the receiver and the other to adjust knob.

With the transmitter on and receiver activated:

- Attach the test light to the probes according to figure 6.
- Set the boundary switch to LOW if your intended zone is less than about a 40 foot radius.
- Hold the receiver collar in the following manner (see figure 7):
 - Receiver case parallel to the ground
 - The logo is pointing out from your body
 - The metal probes are facing up (do not touch metal probes)
- Walk towards the boundary until you hear the **warning** sound. This is where the safe zone ends.
- To adjust the boundary, move the boundary switch down **slowly** until receiver begins to beep at the distance you want. Place the first flag here and walk back into the safe zone until the beeping stops.

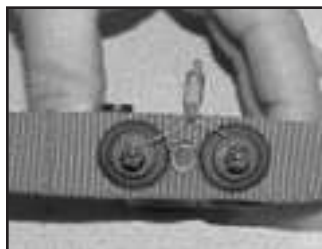


Figure 6

Note: When adjusting the dial position to reduce the boundary size, make sure that the dial is turned slowly, in small increments.

- Once the boundary is set properly at the most critical point, check the rest of the boundary.
- The flags should be placed at 10 ft. intervals along the entire edge of the boundary using the receiver as your guide.
- Before placing collar on your pet and before beginning any training, read the training section and watch the video.



Figure 7

IX. Training your pet

Training tips

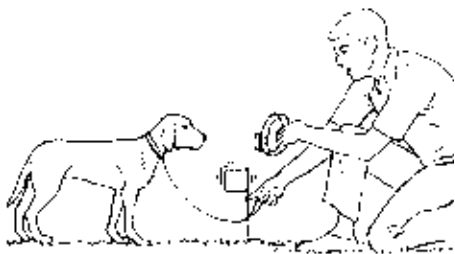
- Before placing collar on your pet or beginning any training, please read the training section and watch the video.
- Even though your dog may appear to be trained after one or two days, it is important to continue the training for the entire 30 day period.
- During the training period, your pet should be contained by other means and should only be allowed in your yard on a leash. Your pet should not be allowed to freely cross the boundary at any time during the training period.
- Training can be very tiring for your pet, so limit training periods to 10 to 15 minutes.
- If your pet becomes hesitant of the training process, remove the receiver collar and resume training the next day and alternate every other day after that.

Boundary training flags

The flags serve as a temporary visual boundary for you and your pet. The flags will later be removed when your pet has become familiar with the “safe zone”.

Boundary Training

1) Hold the receiver in one hand with the case parallel to the ground and the PetSafe logo pointing toward the boundary and, using a leash, walk your pet to the boundary. Shake a boundary flag and give your pet a strong “NO” command, allowing him to hear the beeping from the receiver.



2) Lead him back into the yard and praise him.

3) Repeat steps 1 and 2 around the entire boundary.

4) After a short rest/play period, place the receiver collar and a separate collar attached to a leash on your pet.

5) Let your pet experience a correction by walking into the signal field on his own. Then, immediately lead him back into the “safe zone” when you hear the beeping sound and praise him. Do not “encourage” your pet to cross the boundaries, as this will confuse him. If your pet will not venture into the signal field on his own, have someone else cross the boundary and allow the pet to follow.

6) Repeat step 5 again around the entire boundary.

7) Remove the receiver collar. DO NOT leave your pet alone with the receiver collar on until he is fully trained.

Note: The boundary may vary slightly depending on the orientation of the collar on the pet.

Days 2 through 14

- Repeat steps 4 through 7 at least once per day.

Day 15 - and on

- After 15 days from the start of training, remove every other boundary flag. Repeat every other day. During this period supervise your pet until you feel confident that he is trained to remain in the safe zone.

Imaginary gate training

Once you feel your pet is trained to remain in the safe zone unsupervised you may begin imaginary gate training.

- Remove the receiver collar and replace with a regular collar and leash.
- Walk your pet out to a specific place in your yard, preferably the end of your driveway. Always lead him out at this spot with a leash. If he refuses to cross, help him through by pulling on the collar.
- Your pet will gradually learn that he must wear a leash to venture outside the boundaries. If there are other people in your household alternate between them during this process so that your pet identifies leaving with the leash and not with the person.

Note: The collar should be removed from the pet when in the house, when transmitter is turned off, or anytime the receiver is no longer in the boundary of the transmitter signal.

X. Regular maintenance

Perform each of the following:

- Check batteries (monthly).
- Check probes for tightness (weekly).

- Check your pet's neck for any irritation (daily) and wash neck (weekly).
- Walk the perimeter and remind your pet of the boundaries (monthly).

XI. Return Procedure

Send your product with a brief description back to the address below complete with a legible return address. No prior authorization is needed. We recommend that you ship your return via a carrier that offers tracking capabilities. *You must pay the shipping or freight charges to us. We will then pay the freight charges back to you*

Your product will be repaired or replaced immediately and shipped back to you. There is a nominal labor charge for out of warranty products but all parts are free during the warranty period. If you have had your system for more than one year, call the customer service at 1-800-732-2677 to determine the labor charge.

RSC, Service Warehouse
10427 Electric Ave.
Knoxville, TN 37932

***Please remove the collar, probes and batteries
from the receiver before shipping it.***

General Information

In 1991, the Institute of Electrical and Electronics Engineers (IEEE), and in 1992, the American National Standards Institute (ANSI), updated the 1982 ANSI Standard for safety levels with respect to human exposure in RF energy. Over 120 scientist, engineers, and physicians from universities, government health agencies, and industry, after reviewing the available body of research, developed this updated standard. In March 1993, the Federal Communications Commission (FCC) proposed the adoption of this updated standard. The design of your pet containment system meets all the recommended guidelines established by IEEE, ANSI, and FCC.

Note: Additional transmitters can be purchased to increase your range. Call our customer service at 1-800-732-2677 for additional information.

Electro Magnetic Field Warning Statement

The Instant Fence emits an electro magnetic field (EMF) similar to many household appliances. The Instant Fence emits EMF at 3 feet equivalent to a television set at 1 foot. We advise consumers to place the unit away from places where they would be within 3 feet of the unit for prolonged periods, such as next to a bed. Recommended locations are closets or a garage. While there are no laws or conclusive studies on EMF, Radio Systems recommends taking these precautions.

Declaration of Conformity (DoC)

UL-275, UL-250, IF-202, DIF-202, BC-102, BC-103, DBC-100, DLDT-202, DBDT-202, RF-275, UL-275BM, UL-250BM, SL-400, DSL-400, USB-150, BC-1000

Hereby, Radio Systems Corporation, declares that the above listed products are in compliance with the essential requirements and other relevant provisions of Directive 1999/5/EC.